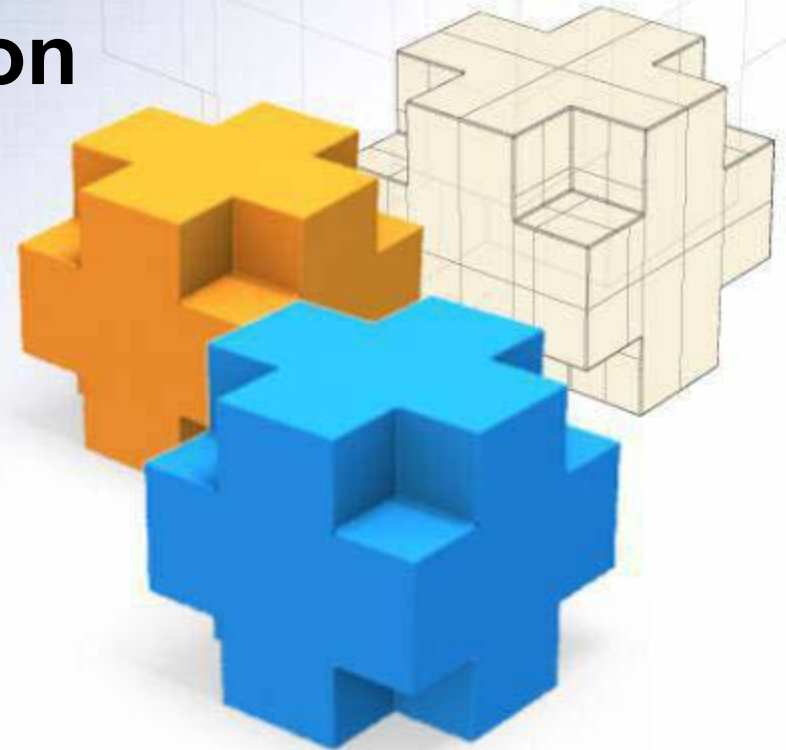


# The Next Step in the Evolution of Collaboration Using SharePoint

January 18, 2005  
1:30 – 2:15

**Presented By:**  
**Bobby Forester**  
**Malcolm Eaton**

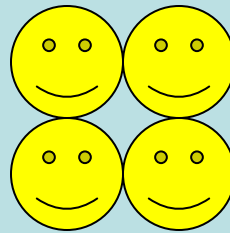


# Agenda

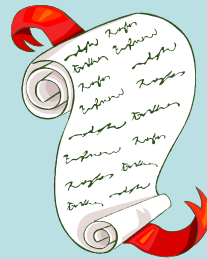
- Overview
  - WSS and SPS Design Issues
  - How CorasWorks can help
    - High-level overview
  - Demo of CorasWorks Web Parts
  - Questions

# Basic Components

## SharePoint Site



Users



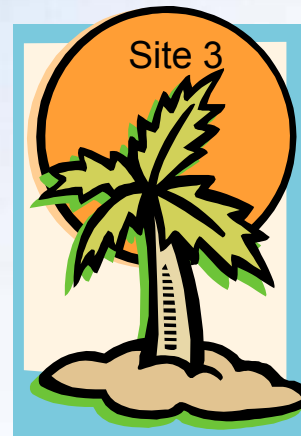
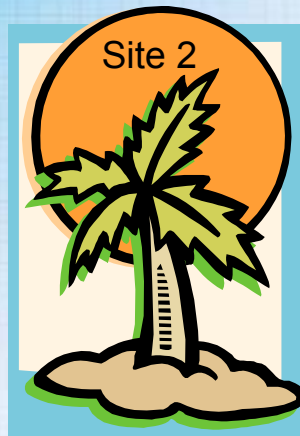
Lists



Document  
Libraries

# SharePoint Connectivity

WSS sites are...



Islands of Information

# SPS and WSS Patterns

## SPS

Semi-Static Publishing  
Easily Reorganized  
Virtual Hierarchy  
IT Development

## SPS Functionality

- Global Search/Index
- Exchange Integration
- BizTalk Integration
- Single Sign-On
- Targeted Topics & Audience
- MySite

## WSS

Collaborative Teams  
Dynamic Information  
Physical Hierarchy  
Super User Development

## WSS Functionality

- List & Library Templates
- Page Templates
- Extensive Modification  
Without Altering Site Def

<http://www.microsoft.com/sharepoint/evaluationoverview.asp>



# Enhancing SharePoint Connectivity

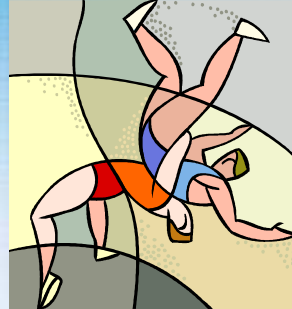
## The Next Evolution with SharePoint:

- Create a 3-tier hierarchical site structure
- Rollup everything within that structure
- Link multiple SharePoint sites to create collaborative solutions to drive business process. Create true solutions that solve business pain.

# The Next Evolution Graphically



Navigation



Roll-ups



Dashboard



E-mail notification

New for 2005  
WSS cross-site  
Searches

# SPS/WSS Architectural Overview

Portal Area

<http://workshop.corasworks.net>

SubArea

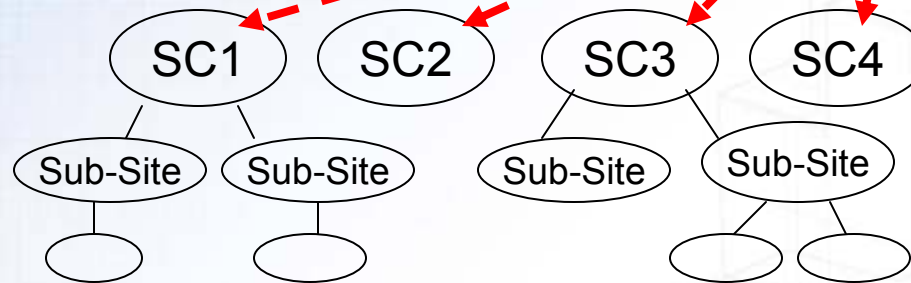
Team

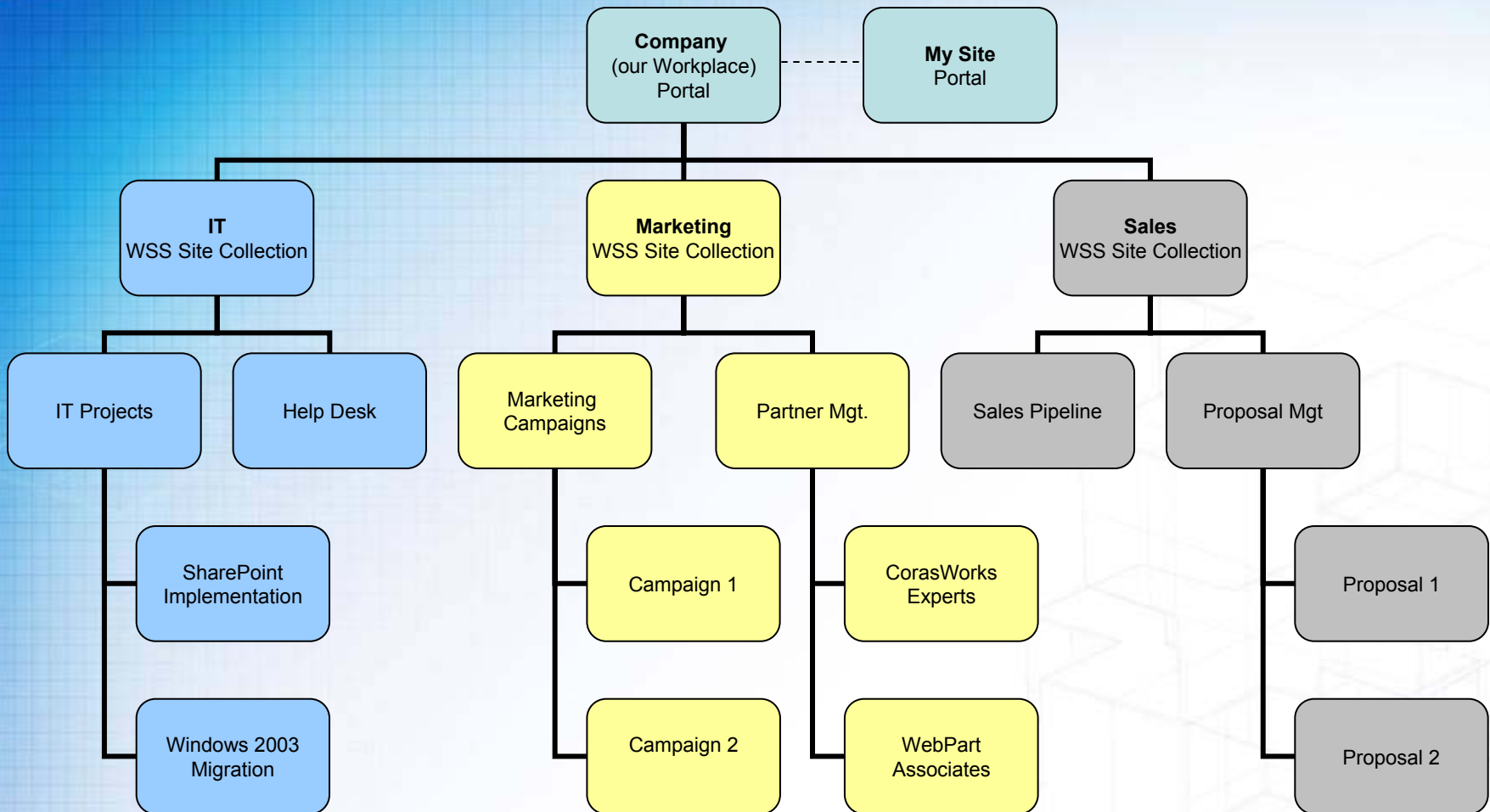
News

Site

## WSS site collection

SPS creates a site by invoking another application (WSS) launching a link to a new WSS site collection.





# The Project Pattern

Dashboard



Project 1



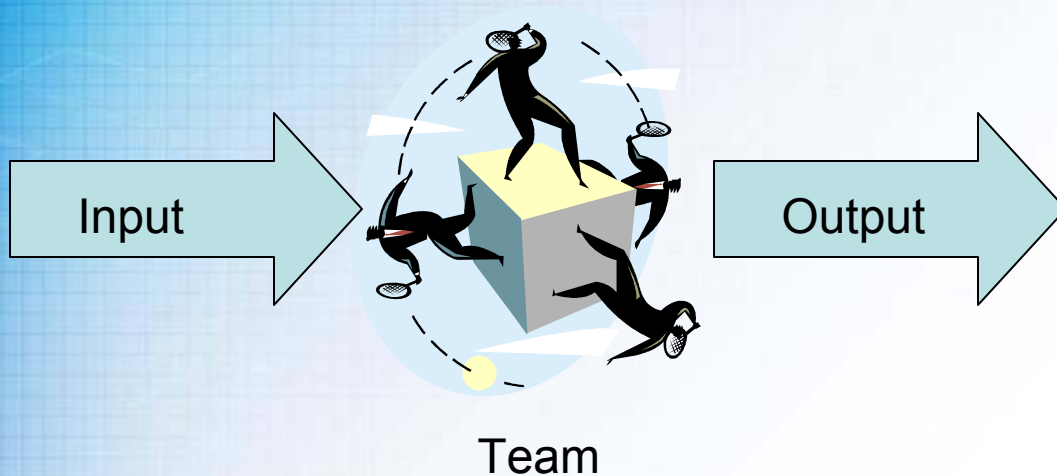
Project 2

## Examples

- IT Projects
- Capital Projects
- Marketing Campaigns
- Proposal Teams

# The Pipeline Pattern

The Pipeline



## Examples

- Help Desk
- Sales Pipeline
- Order Processing
- Loan Processing

# Design Patterns

- With Sites, Connectors, and Dashboards we are able to build Solutions!
  - Project related solutions
  - Pipeline related solutions
  - Hierarchical (Department) related solutions
    - Dashboard, dashboard, dashboard, project solution

# Design Patterns

- Snap together Solutions with webparts to create the connected workplace
  - IT Department
    - Help Desk Solution
    - IT Project Solution
  - Sales Department
    - Proposal Management Solution
    - Pipeline Management Solution
  - . . .

# Demo

- Demo
  - Show how Navigation works
  - Show Roll-Ups

# Next Time

- What did we miss?
  - Administrative Features
    - Installing & Customization
  - Developer Tools
  - My WorkPlace for Outlook
- Contact Us
  - Bobby Forester (773) 251-3980
  - Malcolm Eaton (312) 953-5072

# Questions?

